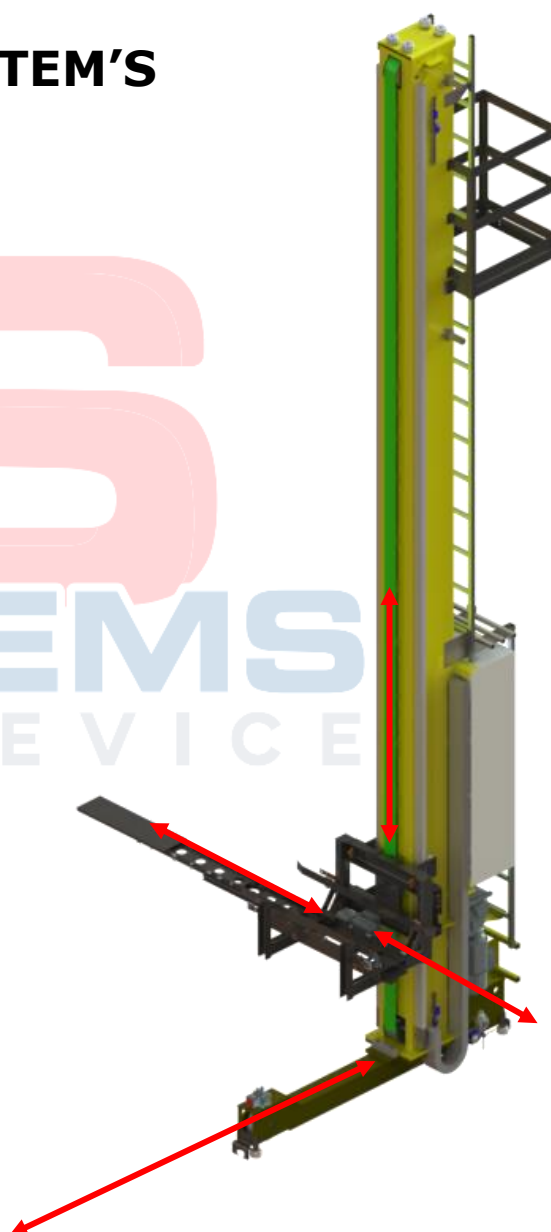


**STAKER – PRESENTATION**

Ref : ST-P-2016

**STAKER – BY BSYSTEM'S**

HIGHT QUALITY, WITH BEST SUPPLIERS  
LOWEST COAST STORAGE DEVICE/LOAD  
PAYLOAD, UP TO 1 750Kg (standard)  
SIMPLE OR DOUBLE DEEP DEVICE  
3000 TO 12500MM HIGHT (standard)



**Main characteristics :**

**Translation:**

- Translation speed : 180m/min (standard)
- Translation acceleration : 0.8m.s<sup>2</sup> (standard)
- Motor : SEW USOCOME with brake and incremental encoder
- Limit switch inductive NC
- Barcode SSI positioning system
- Bumper end of line

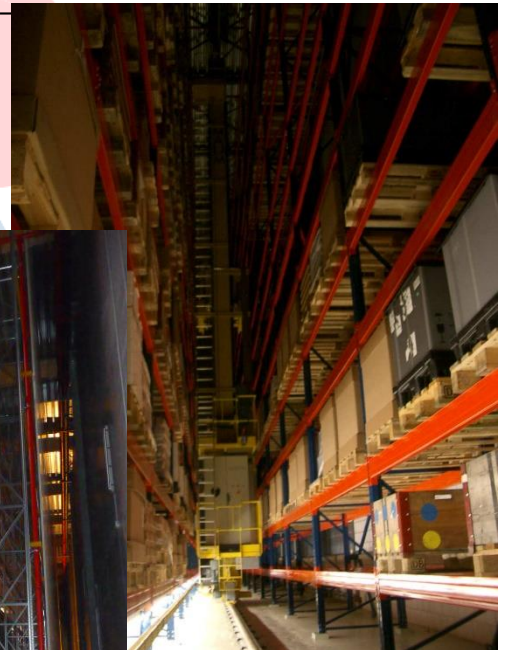
**Lifting:**

- Lifting speed : 45m/min (standard)
- Lifting acceleration : 0.8m.s<sup>2</sup> (standard)
- Motor : SEW USOCOME with brake and incremental encoder
- Limit switch inductive NC
- Barcode SSI positioning system
- Bumper down position

**Electric option :**

- Full electric box incorporate on the Miniload (CPU – resistances –bus profinet)
- Cables and testing of STAKER
- Mautention
- Floor electric box for orders by wms
- Racking
- Periferic safety acces

API /IHM: SIEMENS  
CONVERTERS: SEW



## 1. Translation

### Listing :

- 1 Motor (400VAC)
- 2 Incremental encoder 1024pts (24VCC)
- 3 Brake (400VAC)
- 4 Barcode SSI
- 5 Limit switch NC
- 6 Safety module
- 7 Api (SIEMENS)
- 8 Variator

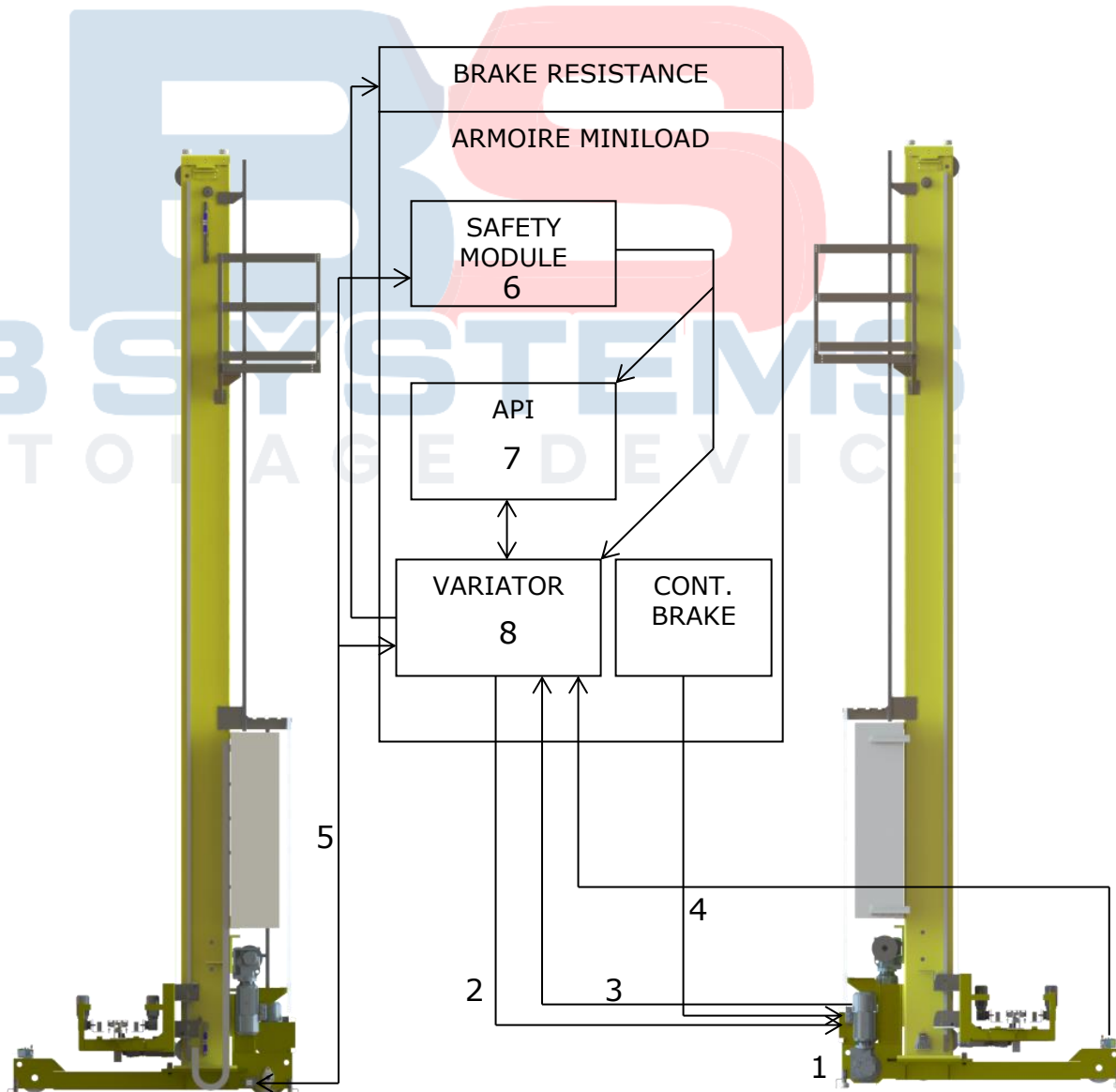
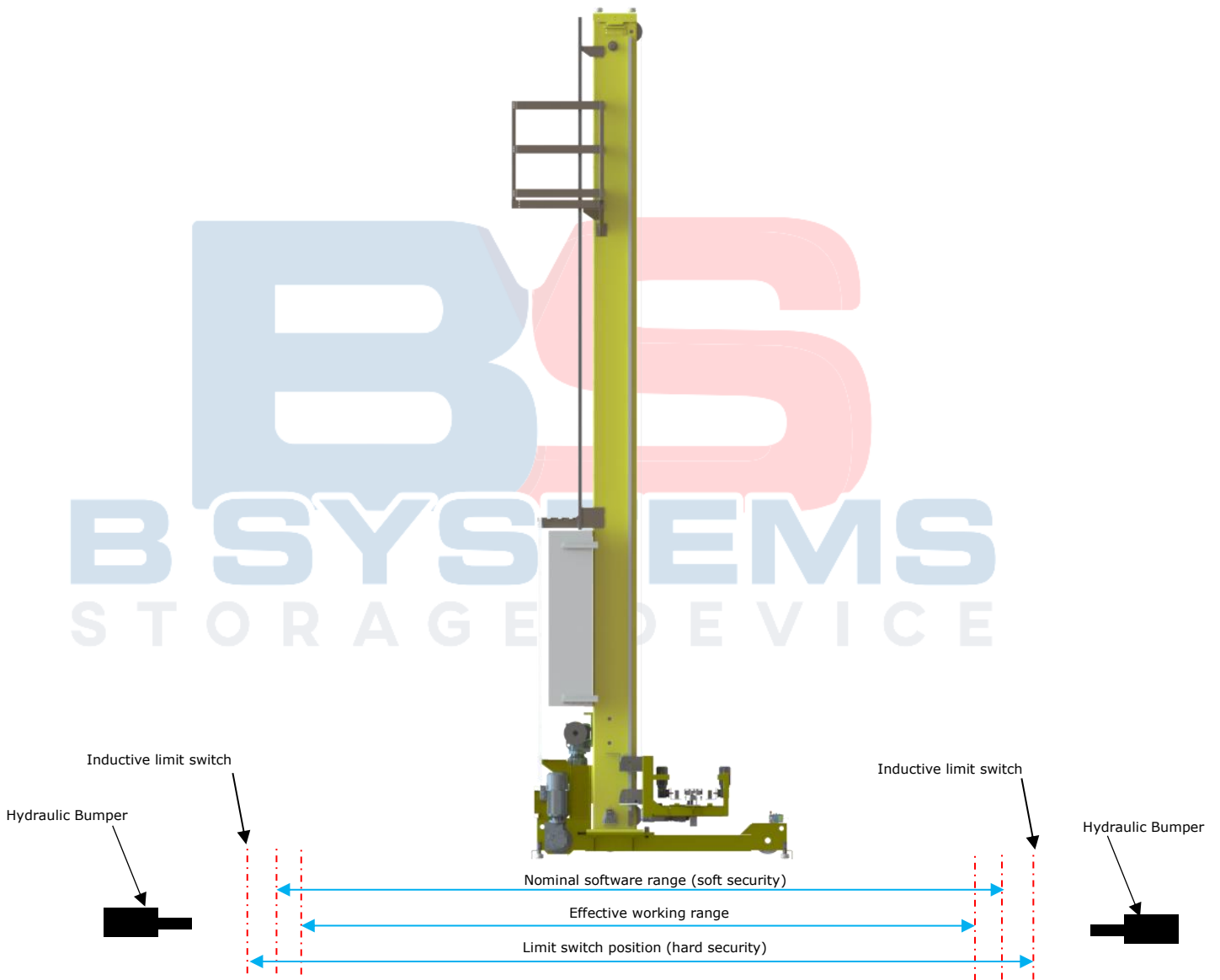


Illustration :



## 2. Lifting

### Listing :

- 1 Motor (400VAC)
- 2 Incremental encoder 1024pts (24VCC)
- 3 Brake (400VAC)
- 4 Barcode SSI
- 5 Limit switch NC
- 6 Safety module
- 7 Api
- 8 Variator

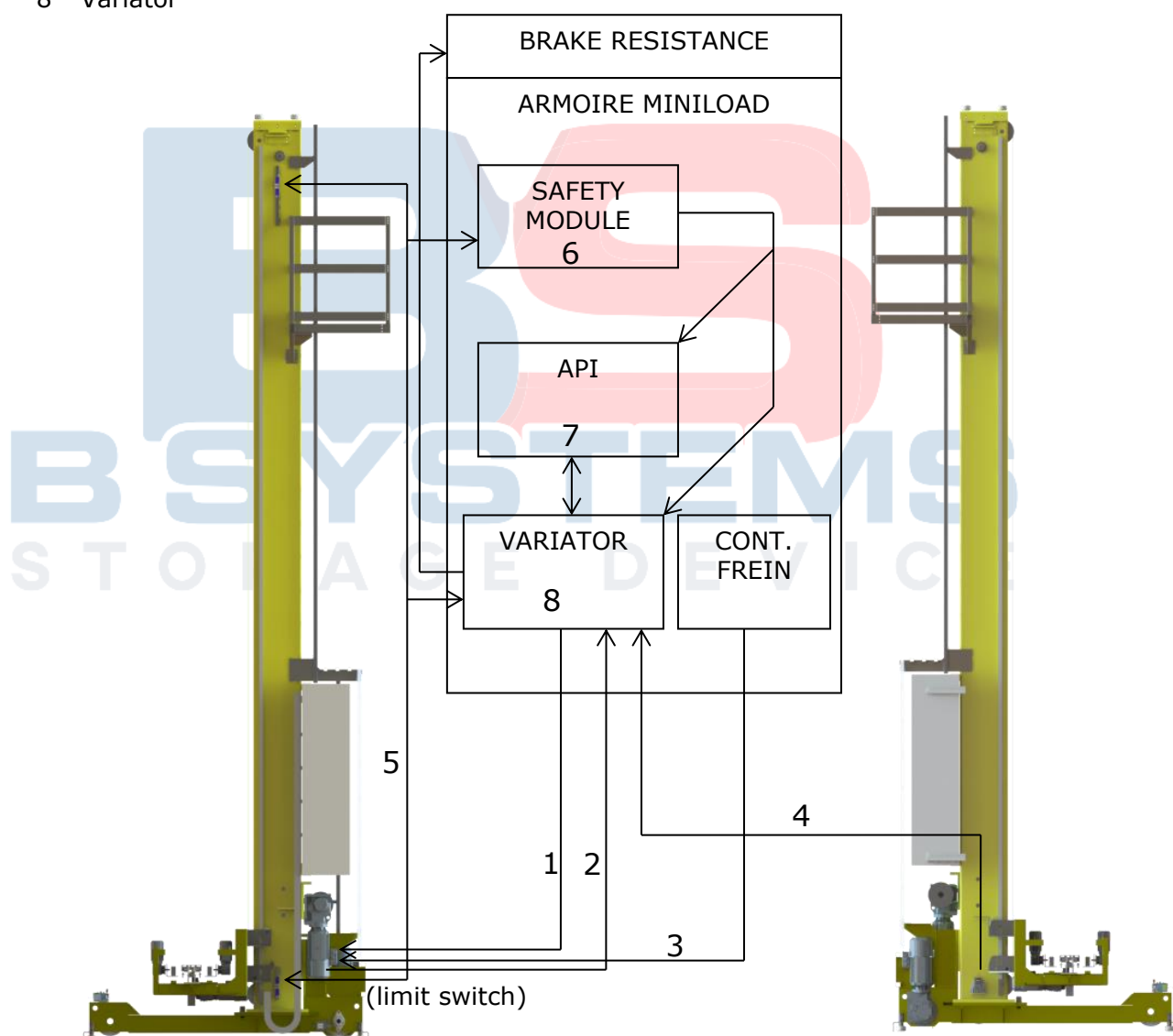
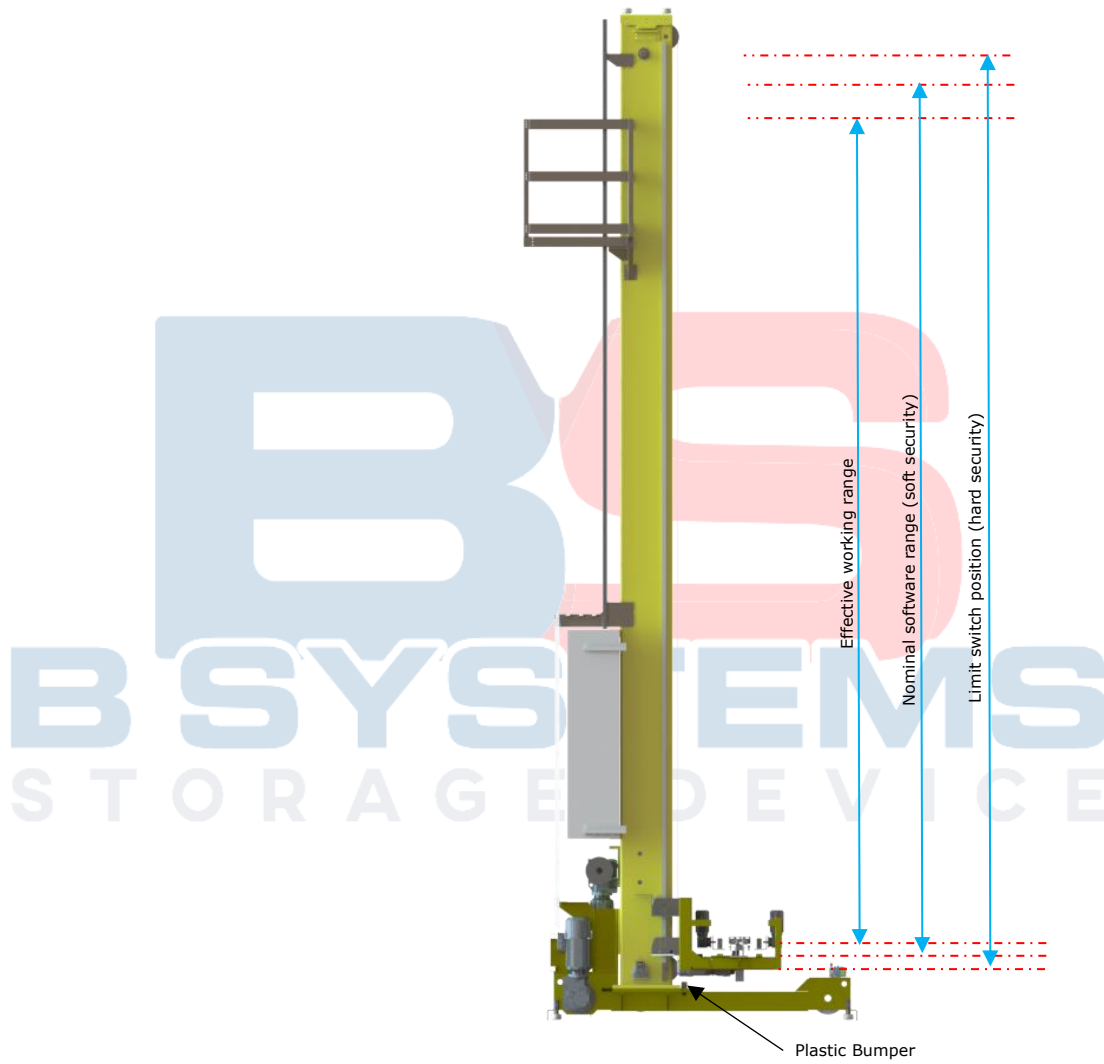


Illustration :



### 3. TELESCOPIC FORK SIMPLE DEEP

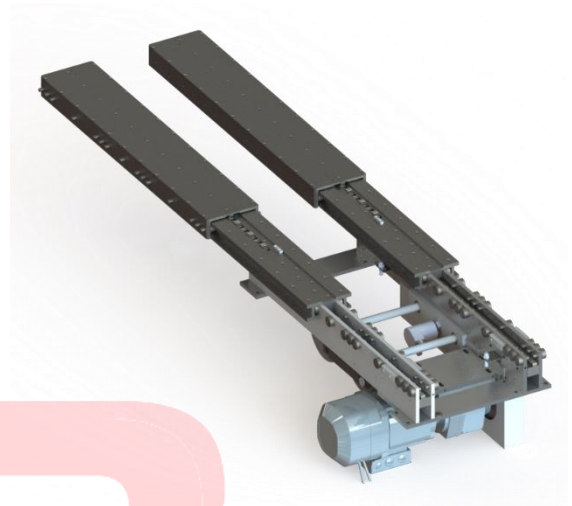
#### 3.1 TELESCOPIC FORK LIGHT SD

TFSD-L : for pallets

Payload : 600

Power : 1.1Kw under 400Vac

Type : simple deep



#### 3.2 TELESCOPIC FORK HEAVY SD

TFSD-H : for pallets

Payload : 1000Kg max

Power : 1.5Kw under 400Vac

Type : simple deep

#### Listing input : for telescopic fork simple deep

- 1 inductive limit switch left NC
- 1 inductive limit switch right NC
- 1 inductive limit switch center NC
- 1 absolute encoder (Profinet)

#### Listing output : for telescopic fork simple deep

- 1 SEW USOCOME motoreductor + brake

#### Other input for staker : on vertical gripper equipment

- 1 optical detector of load under forks
- 1 optical detector for load in stock left
- 1 optical detector for load in stock right
- 1 optical detector for anti overflow left
- 1 optical detector for anti overflow right

#### **4. TELESCOPIC FORK DOUBLE DEEP**

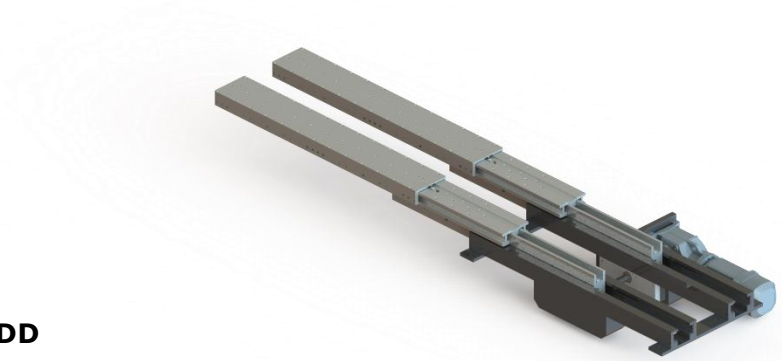
##### **4.1 TELESCOPIC FORK LIGHT DD**

TFDD-L : for pallets

Payload : 600 to 1000Kg max

Power : 1.5Kw under 400Vac

Type : double deep



##### **4.2 TELESCOPIC FORK HEAVY DD**

TFDD-H : for pallets

Payload : 1000 to 1500Kg max

Power : 2.2Kw under 400Vac

Type : double deep

##### Listing input : for telescopic fork simple deep

- 1 inductive limit switch left NC
- 1 inductive limit switch right NC
- 1 inductive limit switch deep 1 left NC
- 1 inductive limit switch deep 1 right NC
- 1 inductive limit switch center NC
- 1 absolute encoder (Profinet)

##### Listing output : for telescopic fork simple deep

- 1 SEW USOCOME motoreductor + brake

##### Other input for staker : on vertical gripper equipment

- 1 optical detector of load under forks
- 1 optical detector 2 deeps for load in stock left
- 1 optical detector 2 deeps for load in stock right
- 1 optical detector for anti overflow left
- 1 optical detector for anti overflow right